

STUDENT FEEDBACK FORMS-2020-21REPORT ANALYSIS

FEEDBACK FORMS STUDENTS: -

Students have a comprehensive view of how their teachers educate and motivate. Student evaluations can be collected quickly, and regularly, giving teachers the opportunities to make real-time adjustments to their teaching. Teachers may actually learn about their students from feedback questionnaires.

(A) Format of feedback forms: -

(Students were given ten parameters.)

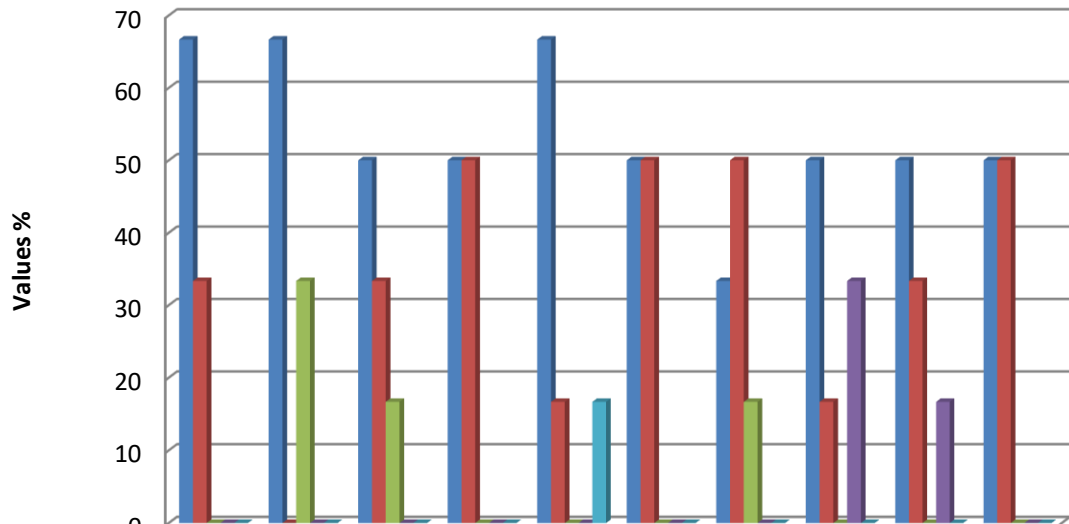
- 1.Suitability of the syllabus content
- 2.Whether it is on par with the course title and latest trends.
- 3.Rate depth of the syllabus.
- 4.Rate the size of the syllabus in terms of load on the student.
- 5.Sequence of chapters.
- 6.I have learnt and understood the subject material/s in this course.
- 7.The Teacher encourages participation and discussion in class & friendliness.
- 8.The teacher uses modern teaching aids, handouts, suitable reference's power point presentation, web-resources, etc.
- 9.The teacher is available and accessible in the Department.
- 10.The evaluation process is fair and unbiased and timely.

[1] SCHOOL OF DARSHANAS: -

- DEPARTMENT OF ADVAITA VEDANTA.
- DEPARTMENT OF VISISHTHADVAITA VEDANTA.
- DEPARTMENT OF DVAITA VEDANTA.
- DEPARTMENT OF AGAMA.
- DEPARTMENT OF MIMAMSA.
- DEPARTMENT OF NYAYA.
- DEPARTMENT OF SAMKHYA YOGA.
- DEPARTMENT OF SHABDABODHA SYSTEMS AND COMPUTATIONAL LINGUISTICS.
- DEPARTMENT OF YOGA

❖ (PG) POST-GRADUATION.

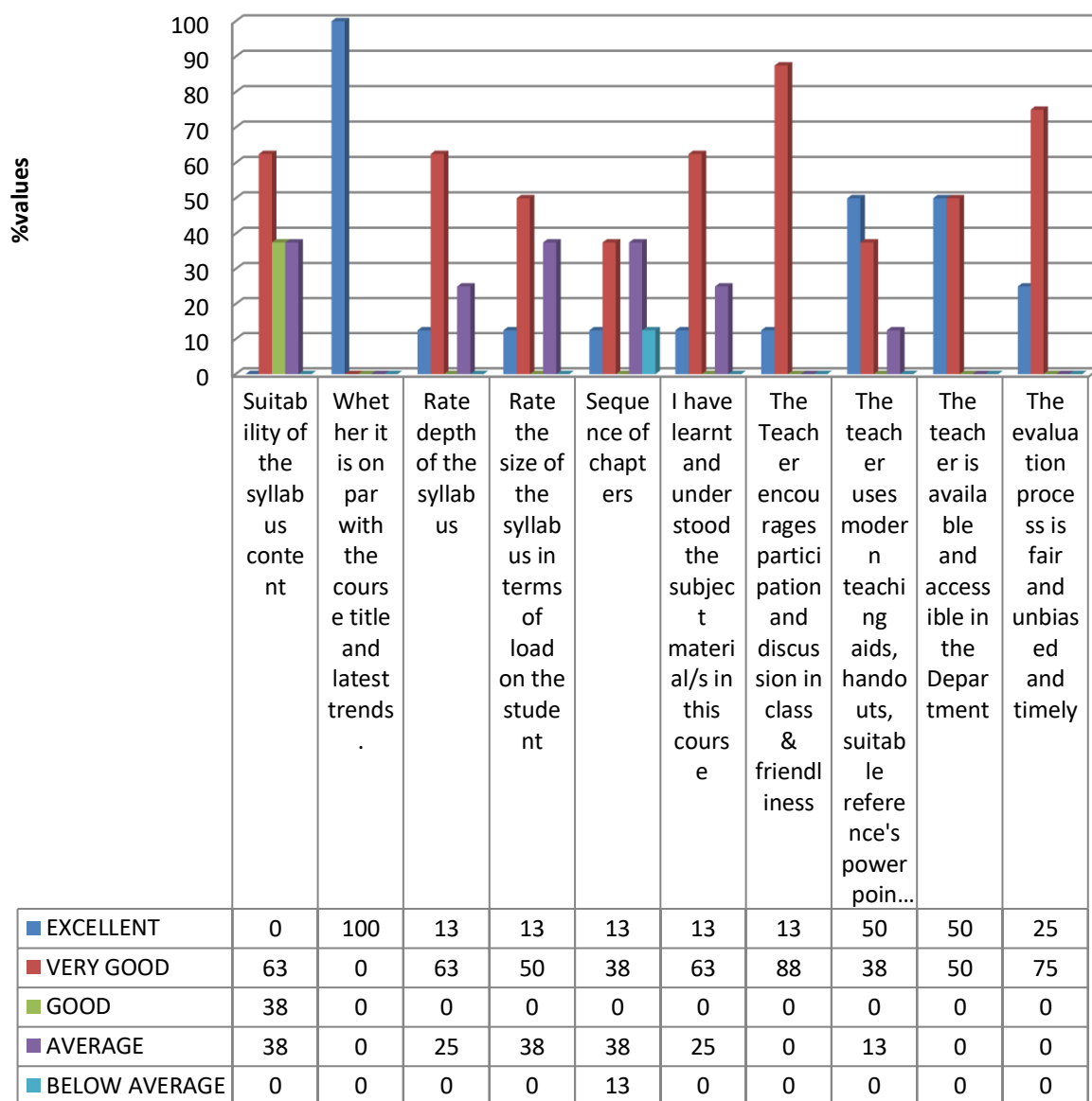
Visistadvaita Vedanta-PG-2020-21



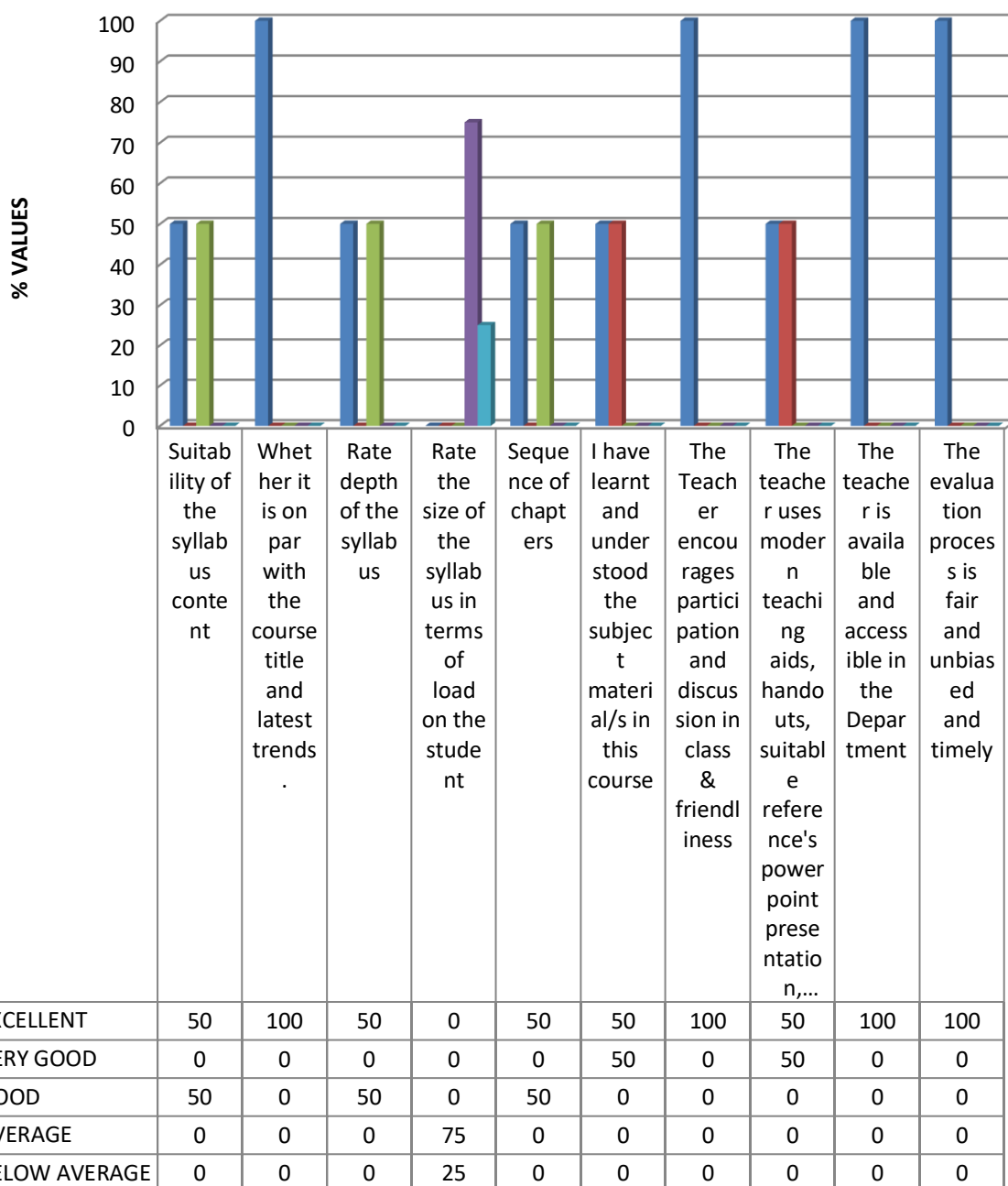
	Suitability of the syllabus content	Whether it is on par with the course title and latest trends	Rate depth of the syllabus.	Rate the size of the syllabus in terms of load on the student	Sequence of chapters	I have learnt and understood the subject material/s in this course	The Teacher encourages participation and discussion in class & friendliness	The teacher uses modern teaching aids, handouts, suitable reference's power point presentation, web-reso...	The teacher is available and accessible in the Department	The evaluation process is fair and unbiased and timely
■ Excellent	67	67	50	50	67	50	33	50	50	50
■ Very Good	33	0	33	50	17	50	50	17	33	50
■ Good	0	33	17	0	0	0	17	0	0	0
■ Average	0	0	0	0	0	0	0	33	17	0
■ Below Average	0	0	0	0	17	0	0	0	0	0

❖ (PG) POST-GRADUATION.

Mimamsa - PG- 2020-2021



SAMKHYA YOGA -PG- 2020-2021



(B) Observations/Findings: -

- **Students were given feedback forms department wise to know the experience they had in every department.**
- **The analysis of the students' feedback reflects the adequacy and availability of learning facilities.**
- **The feedback from the students revealed the validity and adequacy of the syllabus. Also, it is quite helpful in reframing the course content according to the societal needs and career.**
- **The answers rated by the students are considered for the syllabus and accordingly to the other parameters.**