

# **NATIONAL SANSKRIT UNIVERSITY :: TIRUPATI**

## **Student Feedback Forms-2020-21 Report Analysis**

### **I. Feedback Forms Students: -**

Students have a comprehensive view of how their teachers educate and motivate. Student evaluations can be collected quickly, and regularly, giving teachers the opportunities to make real-time adjustments to their teaching. Teachers may actually learn about their students from feedback questionnaires.

### **II. Format of feedback forms: -**

**(Students were given ten parameters.)**

1. Suitability of the syllabus content
2. Whether it is on par with the course title and latest trends.
3. Rate depth of the syllabus.
4. Rate the size of the syllabus in terms of load on the student.
5. Sequence of chapters.
6. I have learnt and understood the subject material/s in this course.
7. The Teacher encourages participation and discussion in class & friendliness.
8. The teacher uses modern teaching aids, handouts, suitable reference's power point presentation, web-resources, etc.
9. The teacher is available and accessible in the Department.
10. The evaluation process is fair and unbiased and timely.

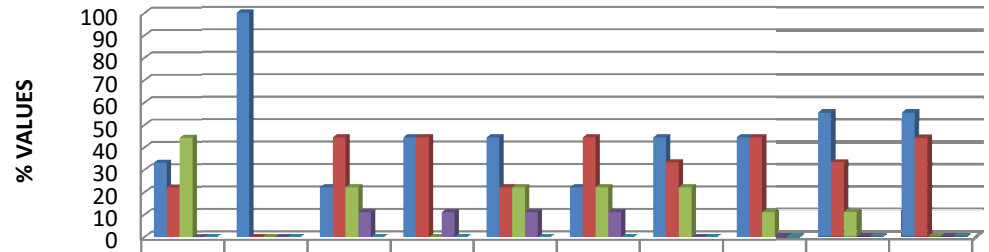
### **[1] SCHOOL OF VEDA-VEDANGA: -**

- a. DEPARTMENT OF JYOTISHA.
- b. DEPARTMENT OF VYAKARANA.
- c. DEPARTMENT OF DHARMA SASTRA.
- d. DEPARTMENT OF COMPUTER SCIENCE.
- e. DEPARTMENT OF HISTORY.
- f. DEPARTMENT OF MATHEMATICS.
- g. DEPARTMENT OF VEDABHASHYAM.

**a. DEPARTMENT OF JYOTISHA: -**

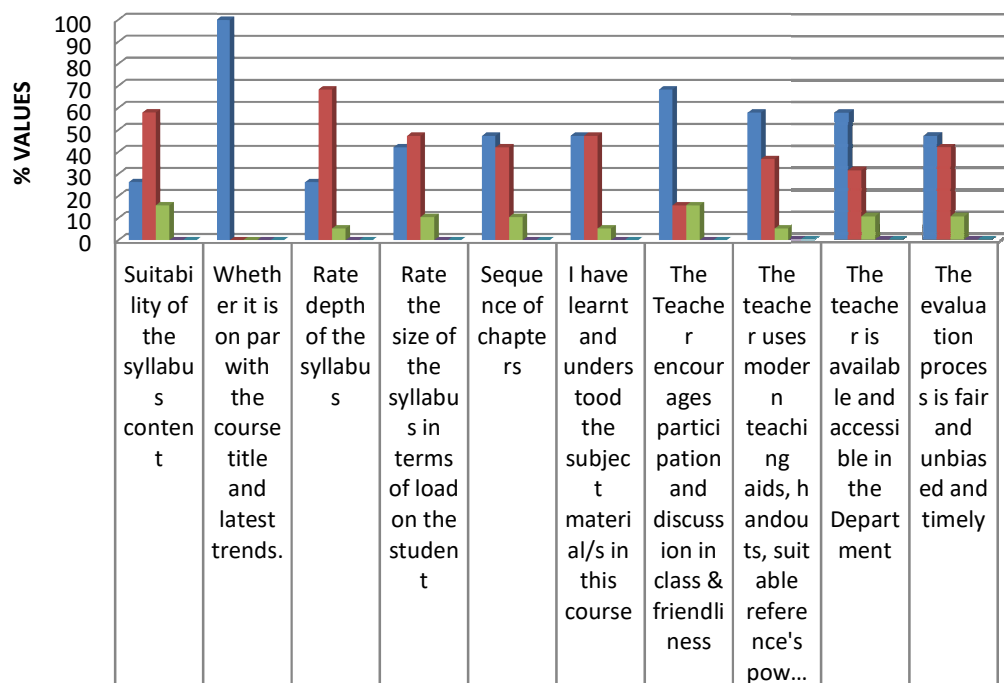
❖ (UG) UNDER-GRADUATION.

## JYOTISHA-SASTRI-2020-21 REPORT ANALYSIS

[illegible]

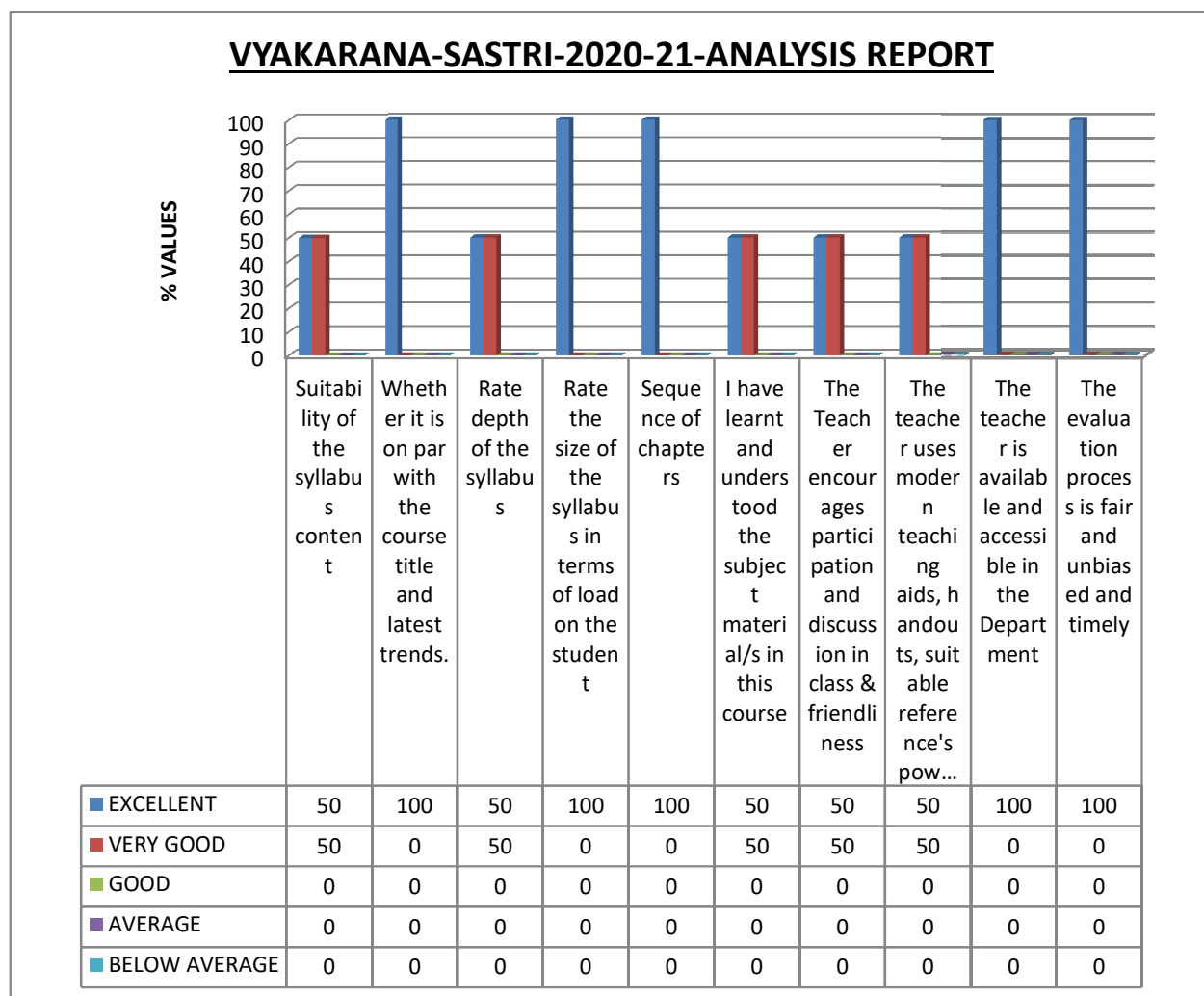
❖ (PG) *POST-GRADUATION*.

## JYOTISHA-ACHARYA-2020-21-REPORT ANALYSIS

[illegible]

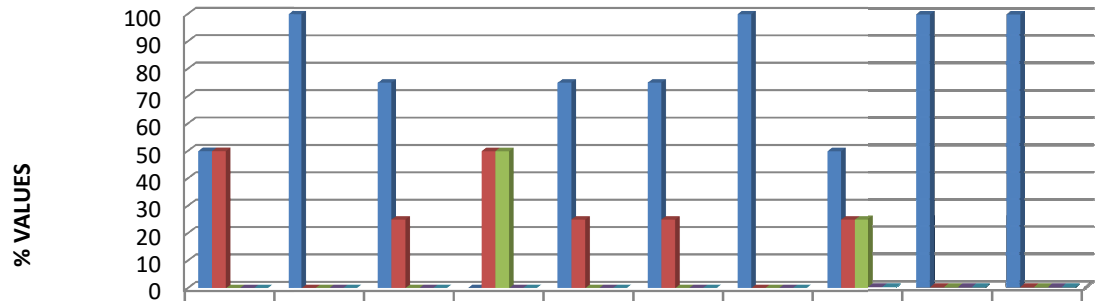
**b.DEPARTMENT OF VYAKARANA: -**

❖ (UG) UNDER-GRADUATION.



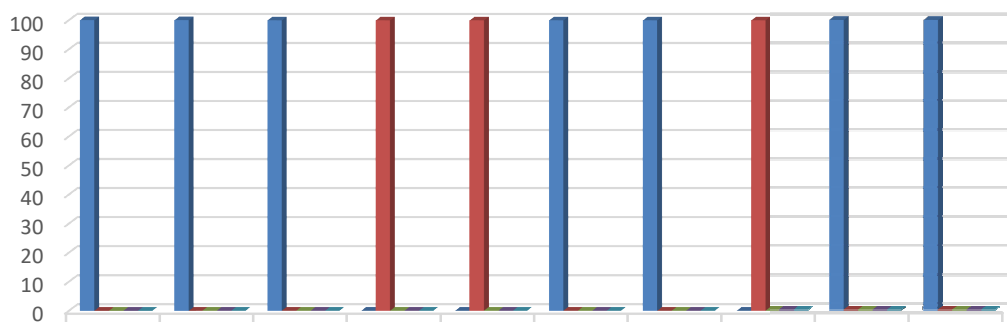
❖ (PG) *POST-GRADUATION.*

## VYAKARANA-ACHARYA-2020-21- REPORT ANALYSIS

[illegible]

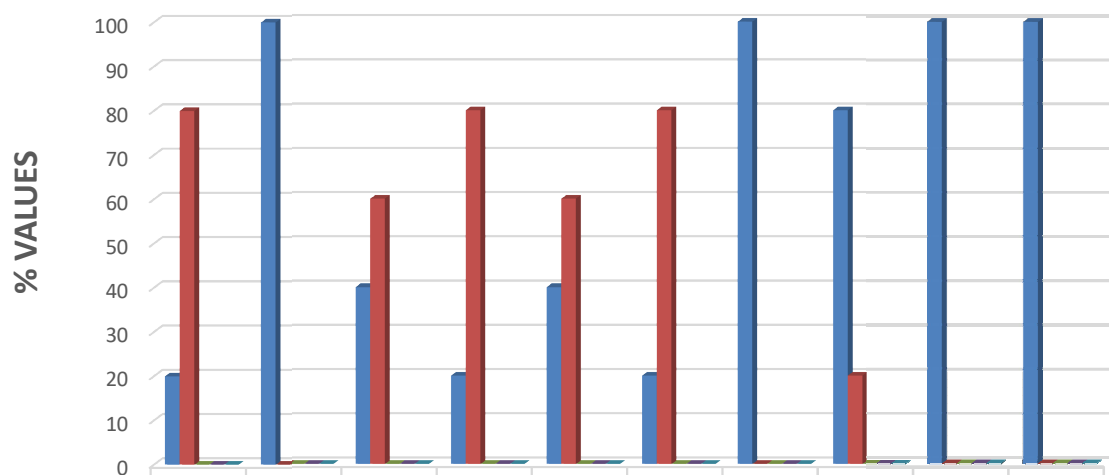
❖ (UG) UNDER-GRADUATION.

**% VALUES**

[illegible]

❖ (PG) POST-GRADUATION.

## DHARMA SASTRA-PG-2020-21-REPORT ANALYSIS

[illegible]

❖ (UG) UNDER-GRADUATION.

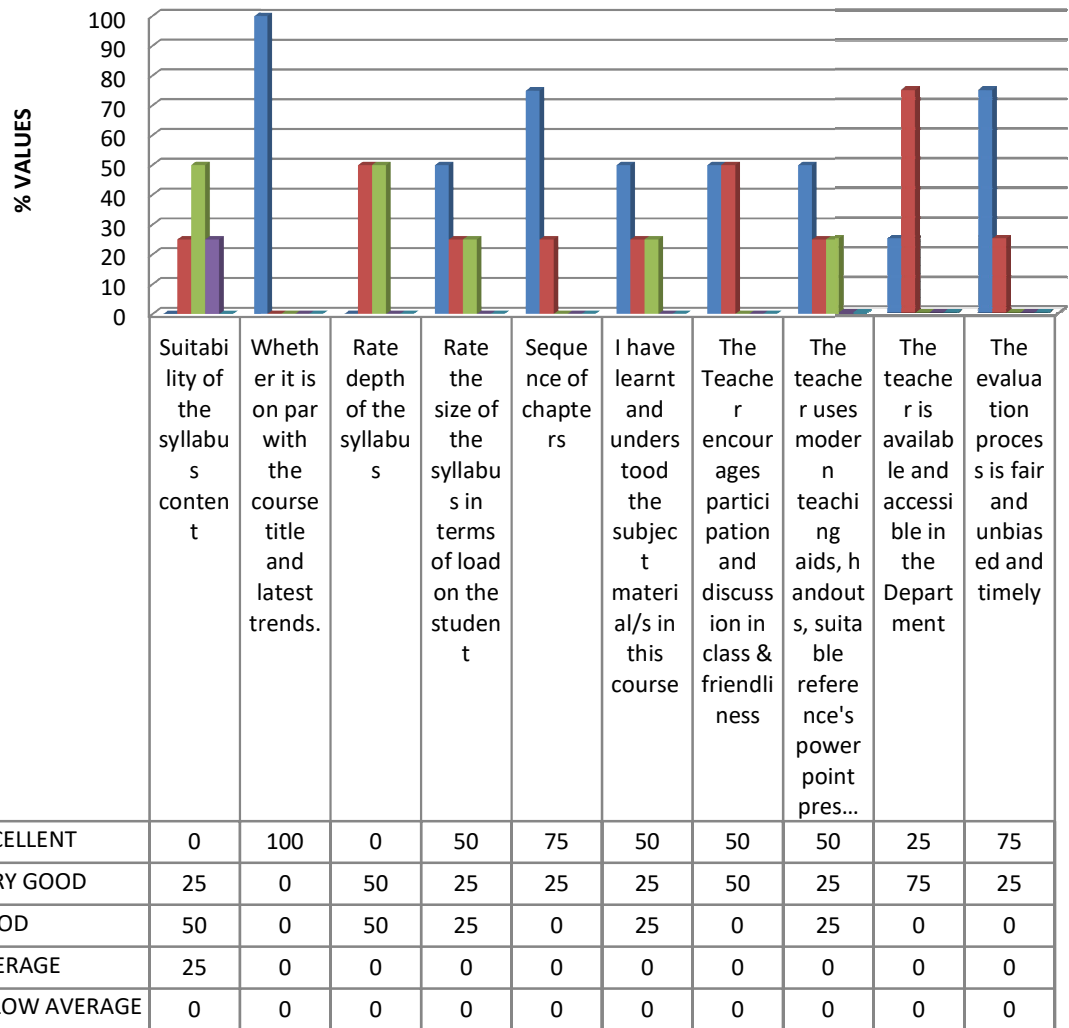
Category	Blue (%)	Red (%)	Green (%)
1	63	25	13
2	100	2	2
3	52	30	25
4	24	57	24
5	35	46	24
6	46	46	7
7	24	68	13
8	46	46	13
9	52	41	13
10	35	57	13

[illegible]



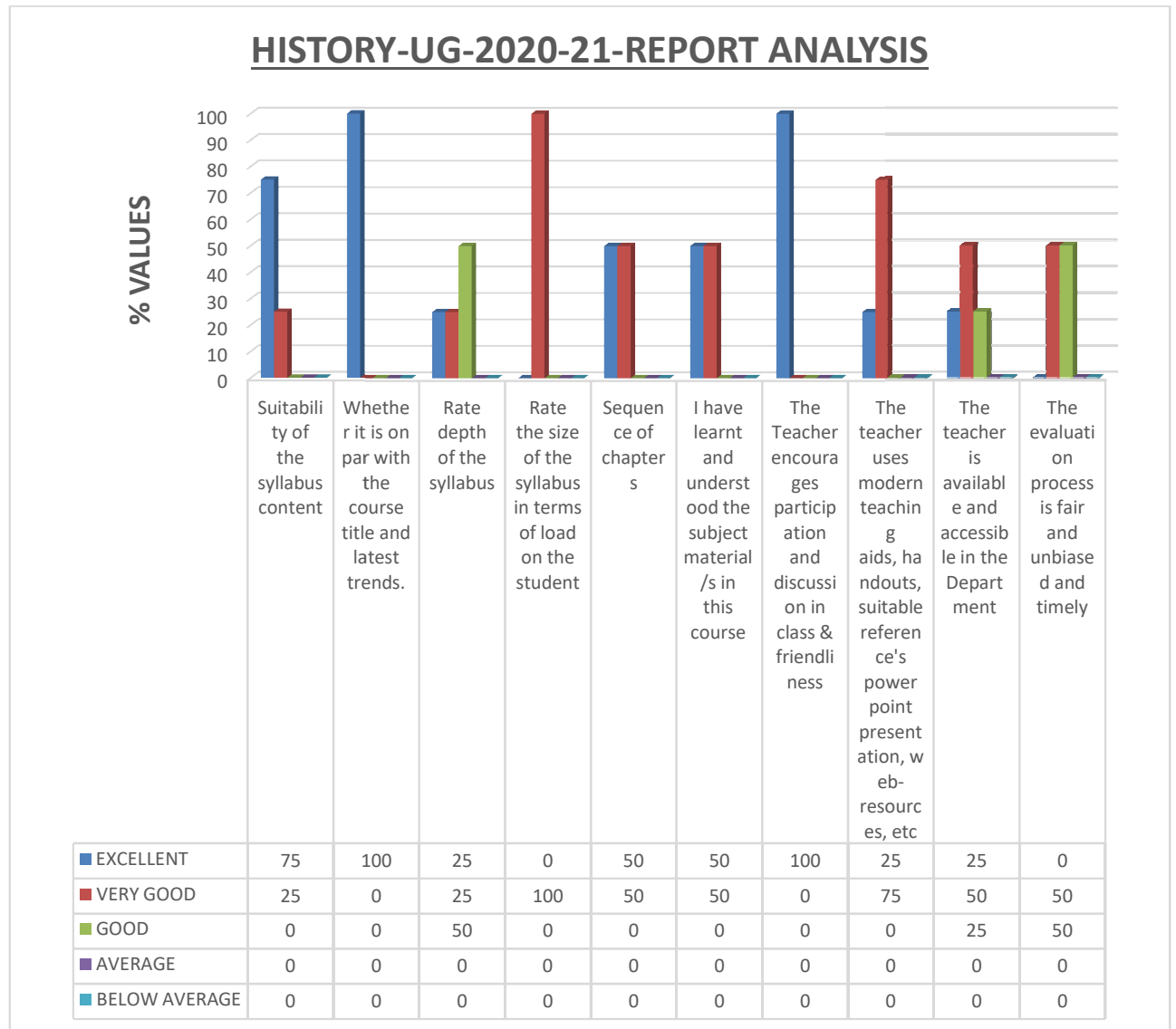
◆ (PG) *POST-GRADUATION.*

## COMPUTER SCIENCE -PG- 2020-21 REORT ANALYSIS



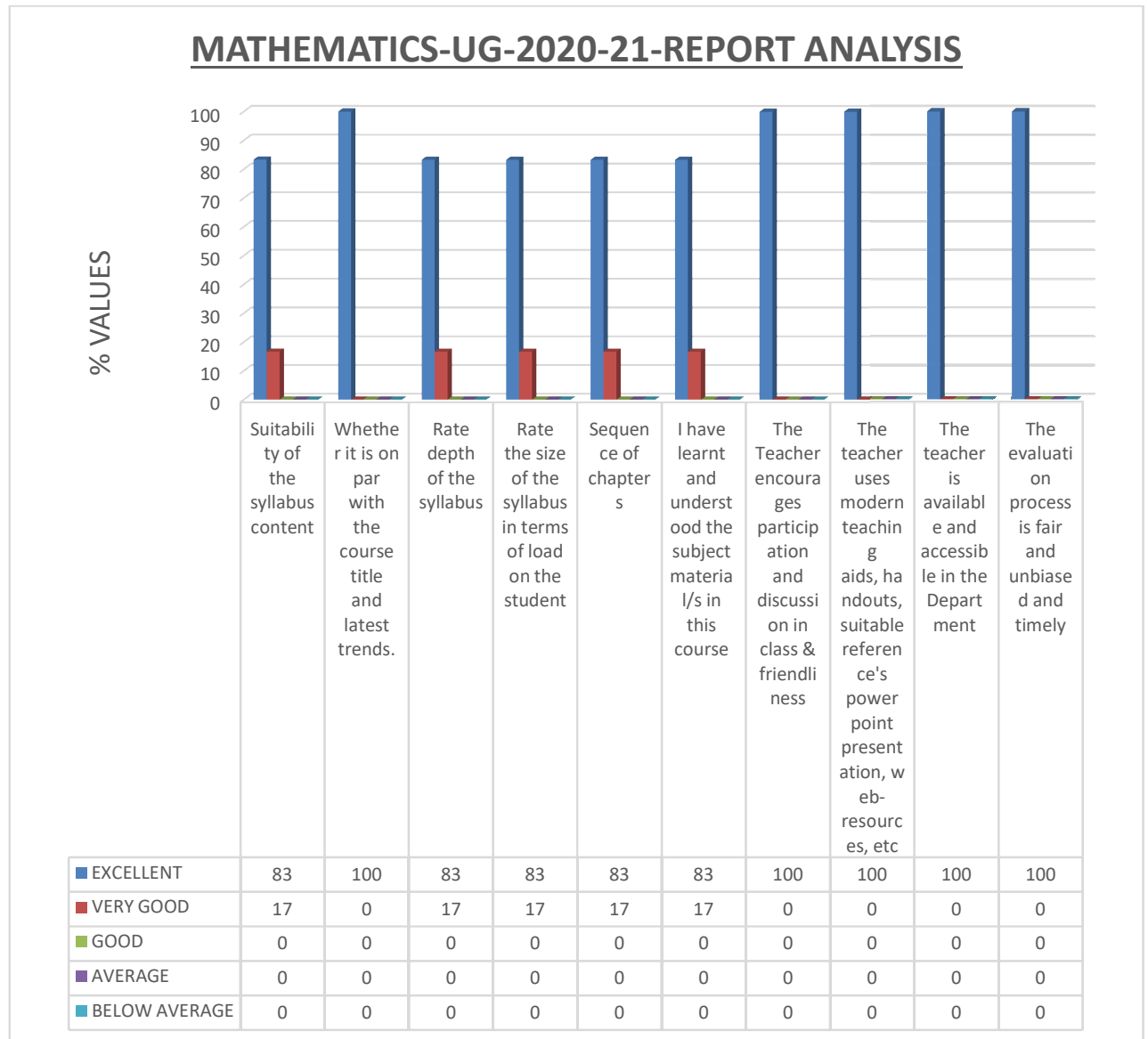
**e.DEPARTMENT OF HISTORY: -**

❖ (UG) UNDER-GRADUATION.



**f.DEPARTMENT OF MATHEMATICS: -**

❖ (UG) UNDER-GRADUATION.



**g. DEPARTMENT OF VEDABHASHYAM: -**

{Data is not digitalized, graphs are not prepared yet.}

**2. SCHOOL OF DARSHANAS: -**

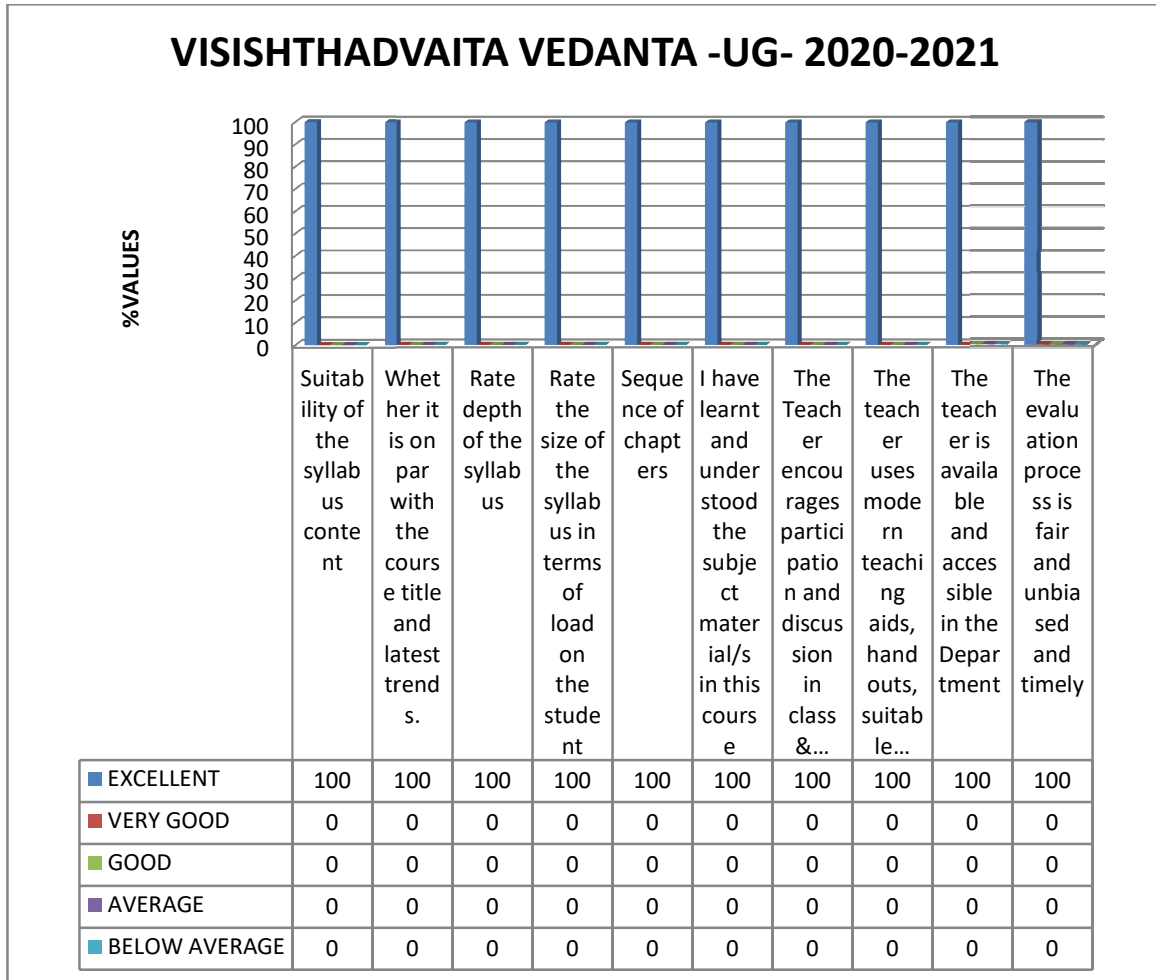
- h. DEPARTMENT OF ADVAITA VEDANTA.
- i. DEPARTMENT OF VISISHTHADVAITA VEDANTA.
- j. DEPARTMENT OF DVAITA VEDANTA.
- k. DEPARTMENT OF AGAMA.
- l. DEPARTMENT OF MIMAMSA.
- m. DEPARTMENT OF NYAYA.
- n. DEPARTMENT OF SAMKHYA YOGA.
- o. DEPARTMENT OF SHABDABODHA SYSTEMS AND COMPUTATIONAL LINGUISTICS.
- p. DEPARTMENT OF YOGA

**a. DEPARTMENT OF ADVAITA VEDANTA: -**

- ❖ *BOTH (UG) UNDER-GRADUATION AND (PG) POST-GRADUATION DATA IS NOT AVAILABLE.*

**b. DEPARTMENT OF VISISHTHADVAITA VEDANTA: -**

❖ (UG) UNDER-GRADUATION.

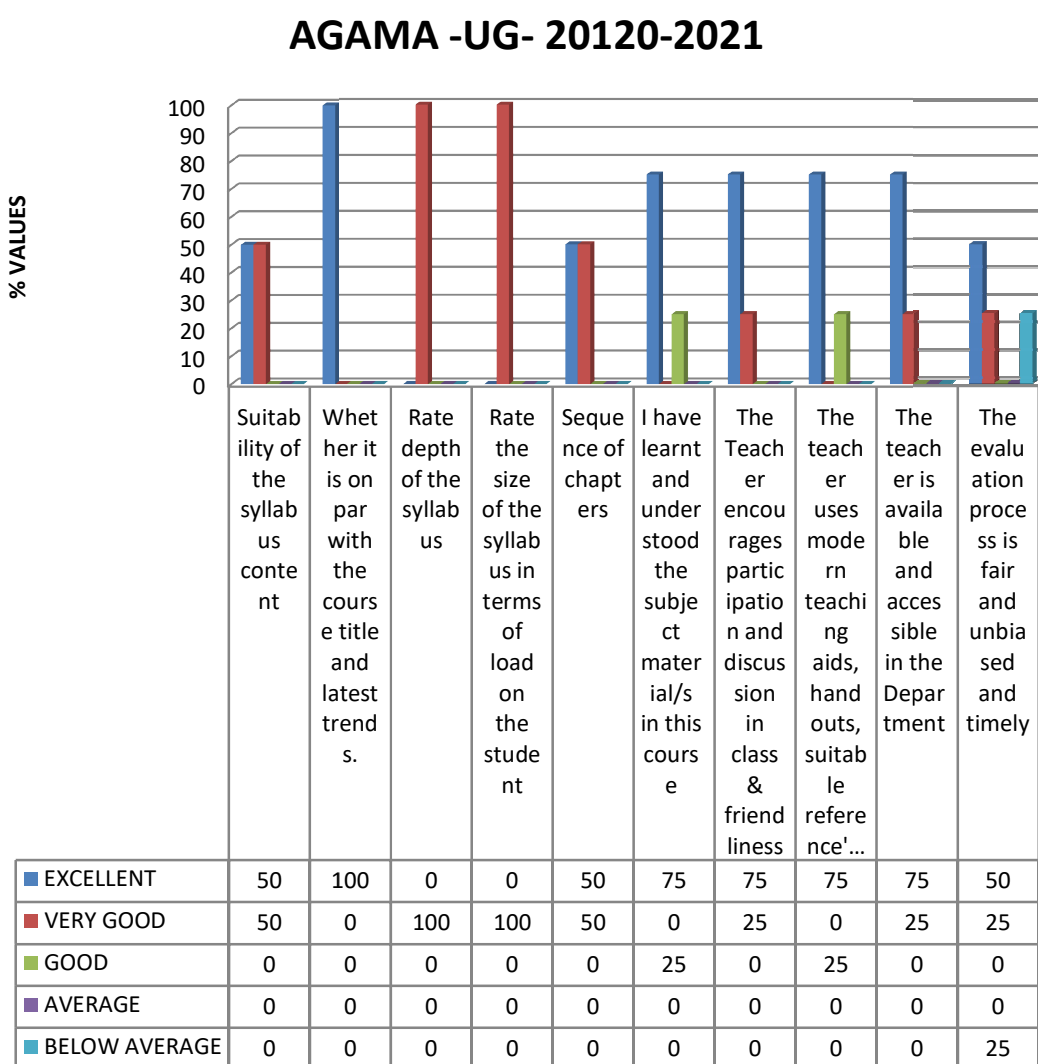


❖ (PG) POST-GRADUATION DATA IS NOT AVAILABLE.

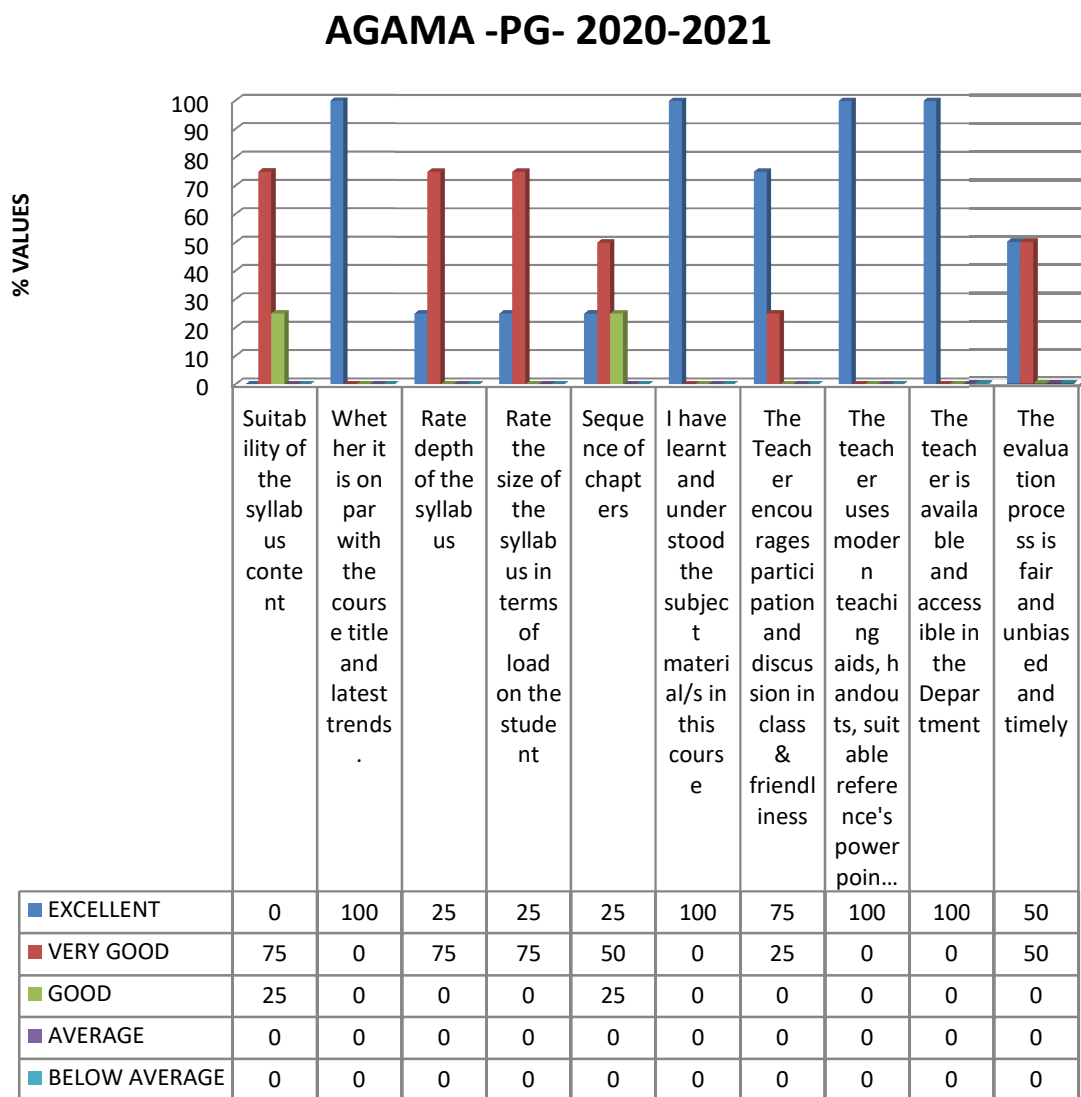
**c. DEPARTMENT OF DVAITA VEDANTA: -**

❖ BOTH (UG) UNDER-GRADUATION AND (PG) POST-GRADUATION DATA IS NOT AVAILABLE.

❖ (UG) UNDER-GRADUATION.

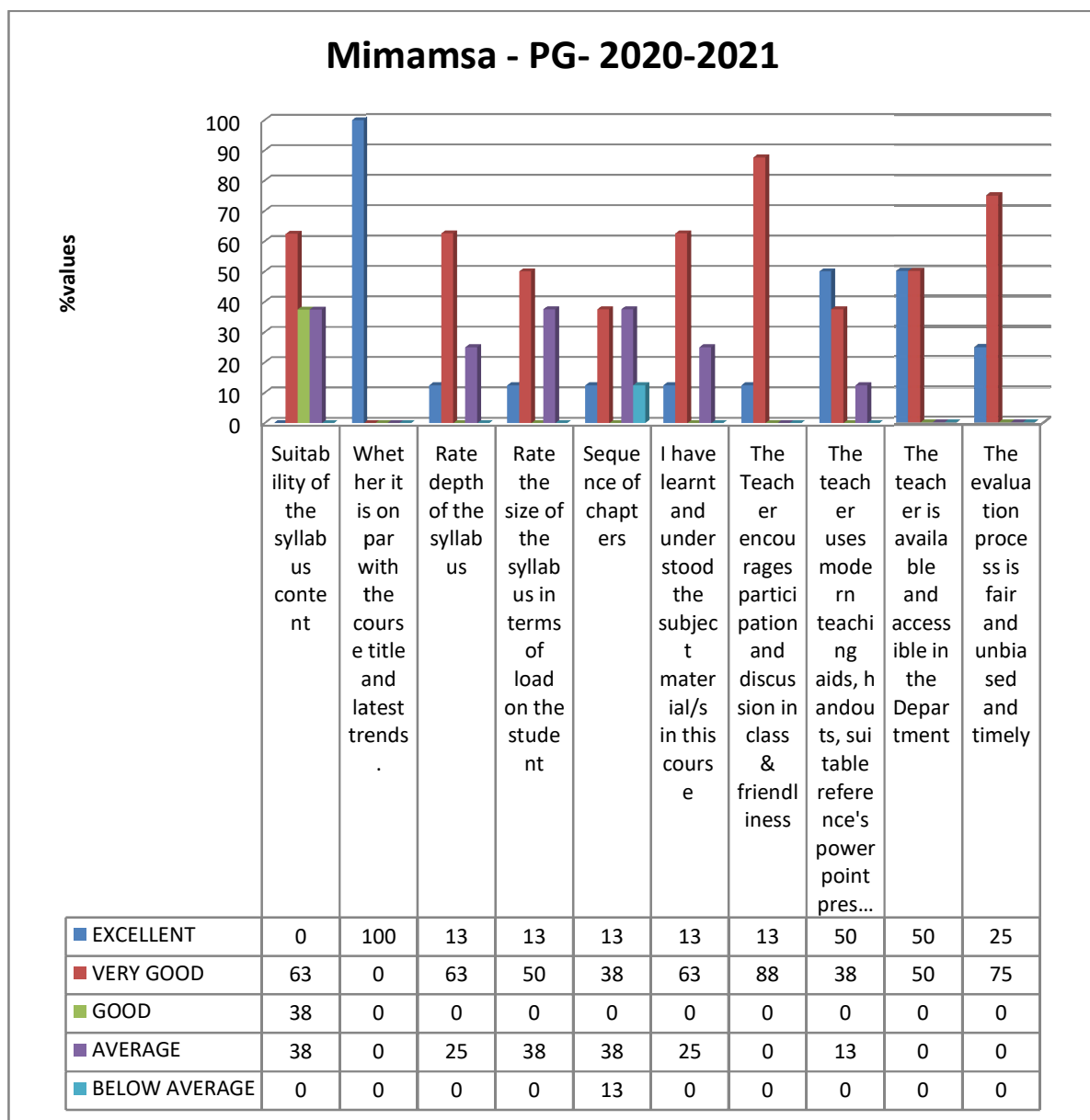


❖ (PG) POST-GRADUATION.



e. **DEPARTMENT OF MIMAMSA:**

❖ *(PG) POST-GRADUATION.*



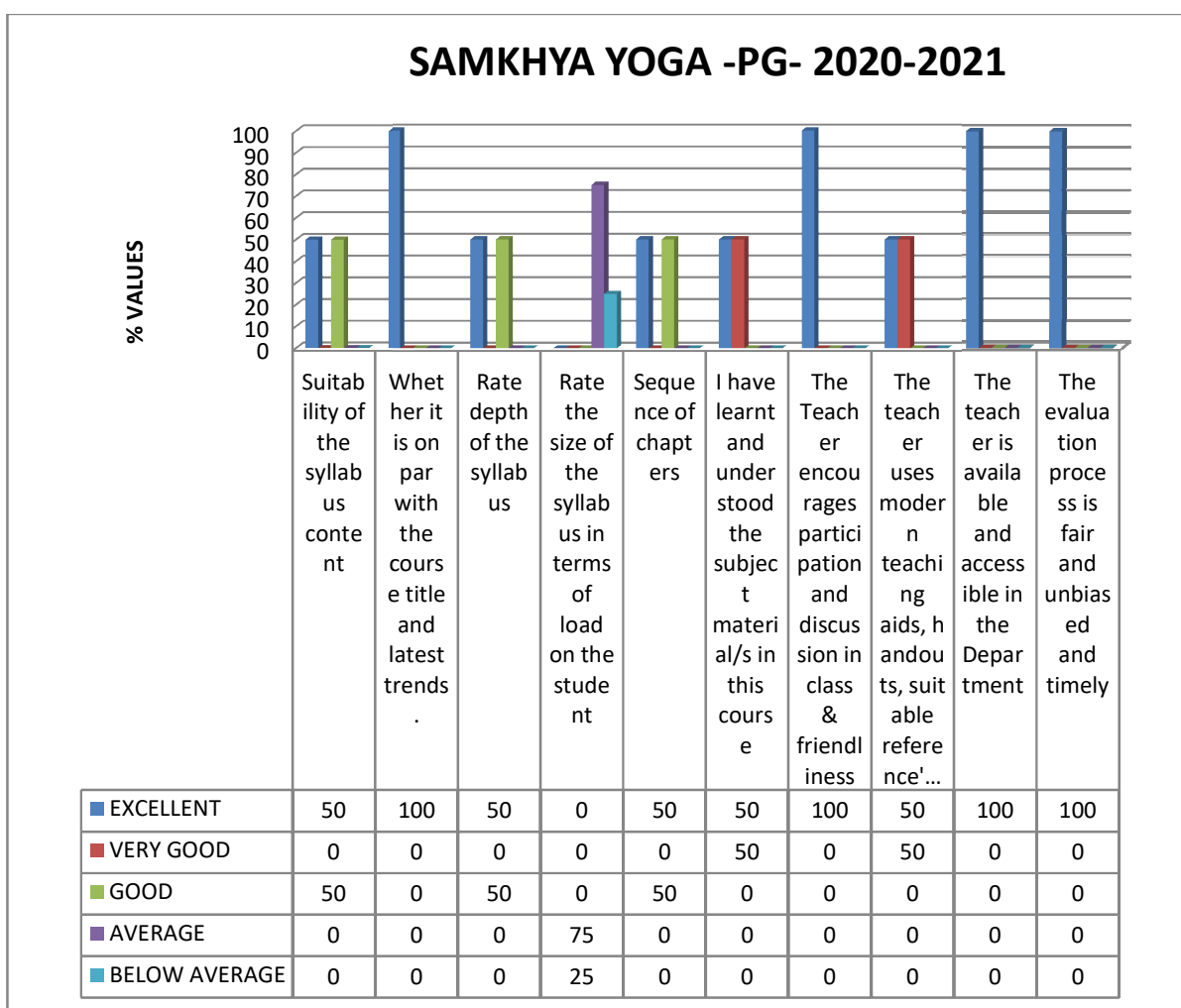


**f. DEPARTMENT OF NYAYA: -**

- ❖ *BOTH (UG) UNDER-GRADUATION AND (PG) POST-GRADUATION DATA IS NOT AVAILABLE.*

**g. DEPARTMENT OF SAMKHYA YOGA: -**

- ❖ *(UG) UNDER-GRADUATION DATA IS NOT AVAILABLE.*
- ❖ *(PG) POST-GRADUATION.*

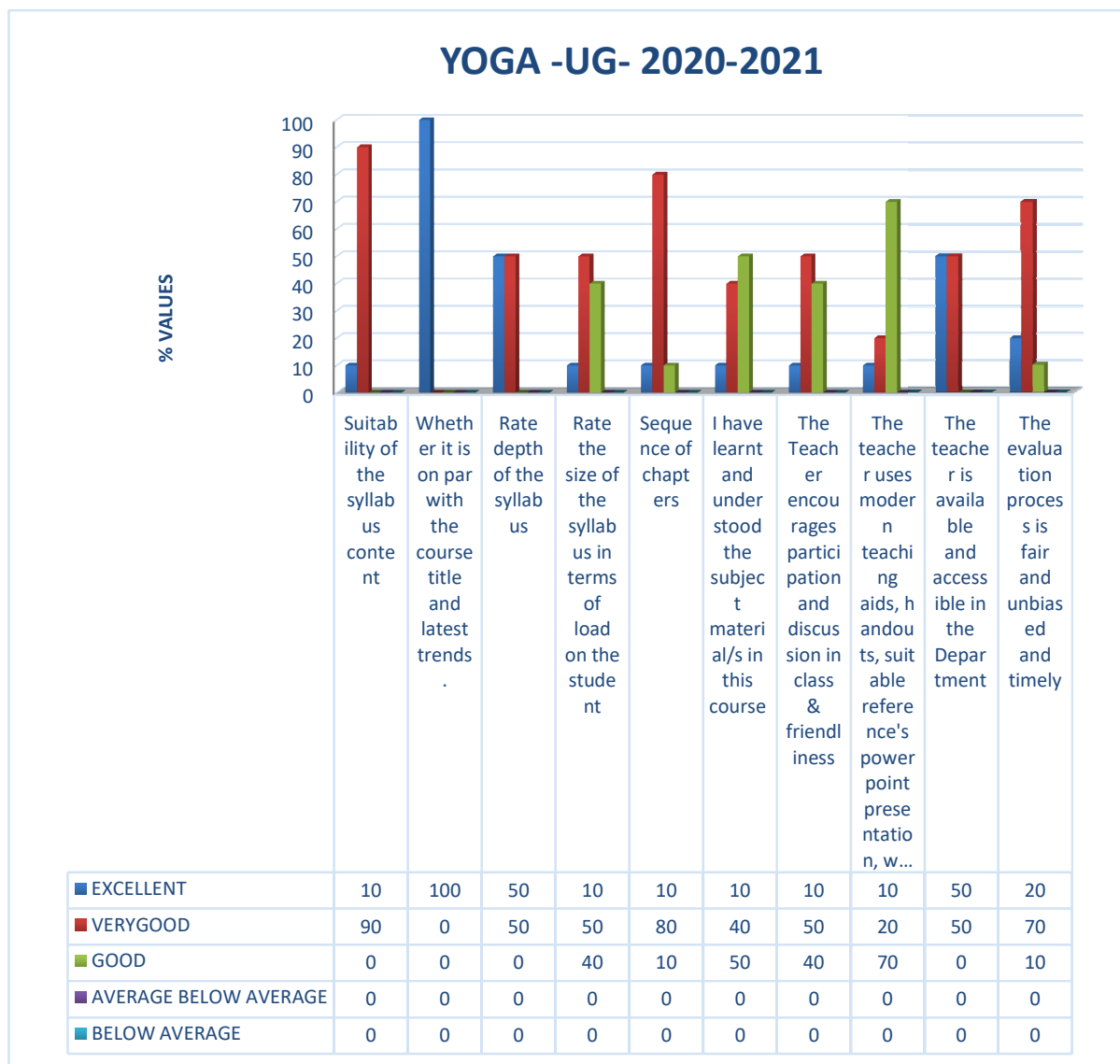


**h. DEPARTMENT OF SHABDABODHA SYSTEMS AND COMPUTATIONAL LINGUISTICS: -**

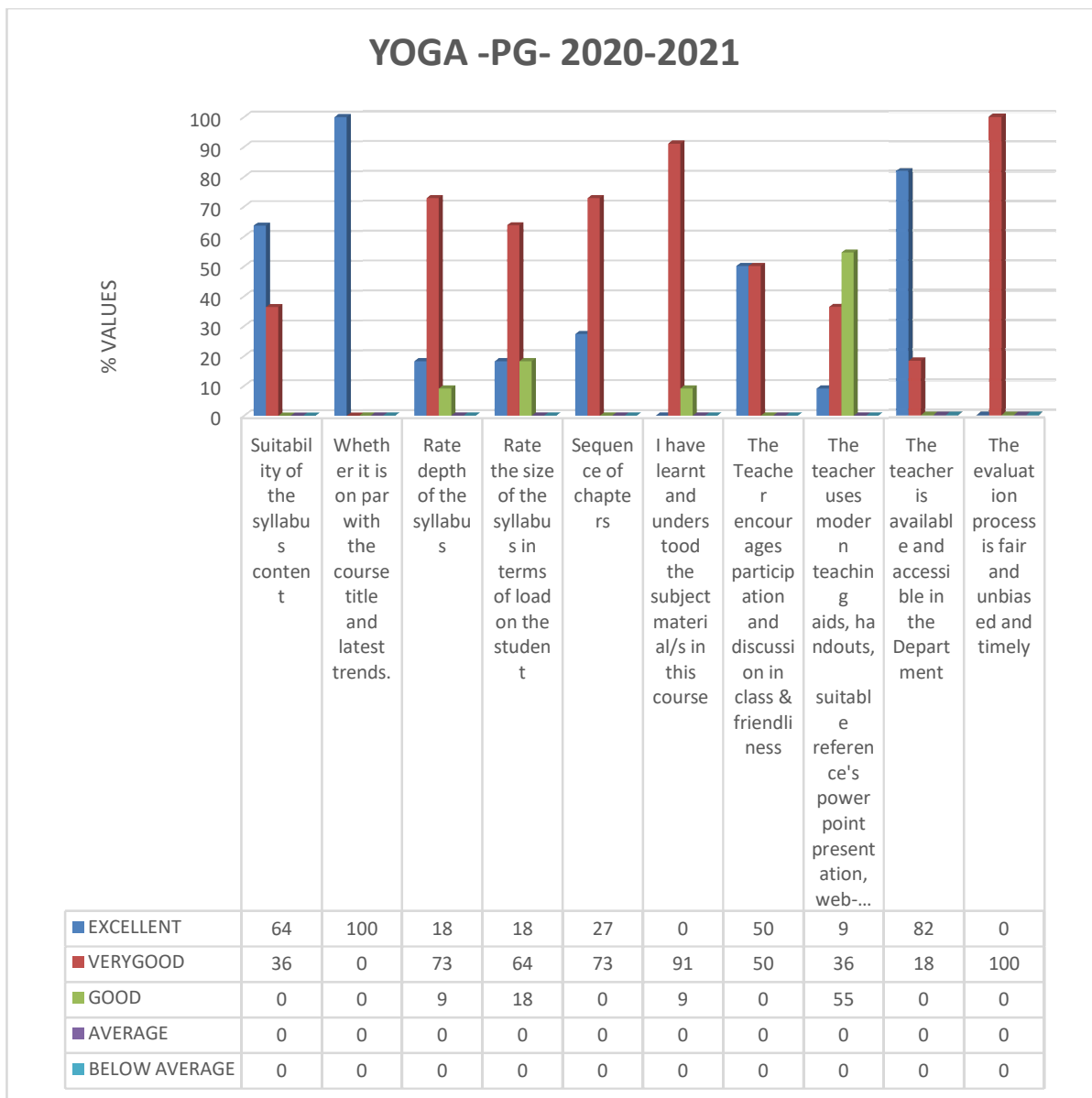
❖ BOTH (UG) UNDER-GRADUATION AND (PG) POST-GRADUATION DATA IS NOT AVAILABLE.

**i. DEPARTMENT OF YOGA: -**

❖ (UG) UNDER-GRADUATION.

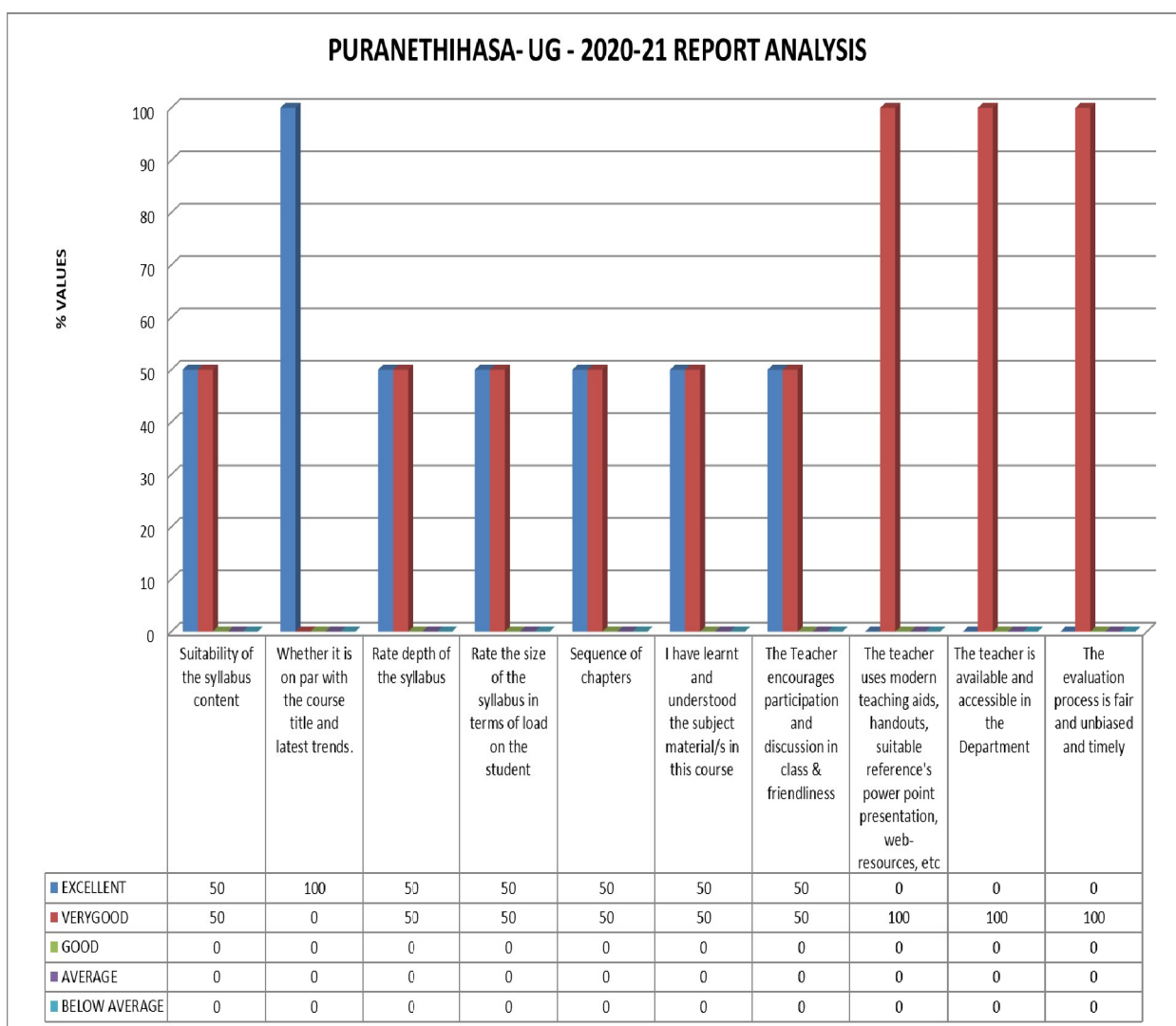


❖ (PG) POST-GRADUATION.

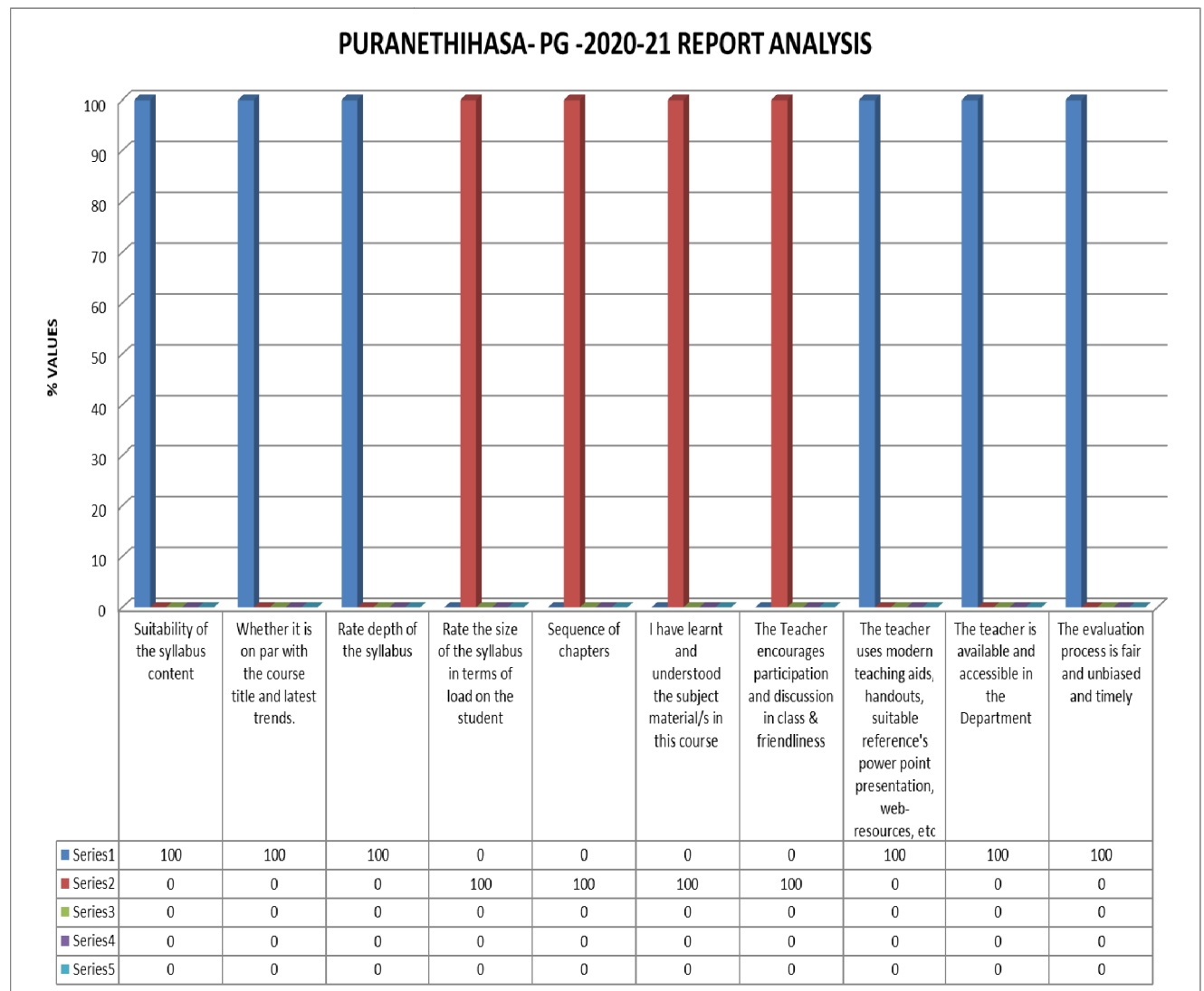


**3. SCHOOL OF SAHITHYA AND SAMSKRUTI: -**

- q. DEPARTMENT OF SAHITHYA.
- r. DEPARTMENT OF PURANETIHASA.
- s. DEPARTMENT OF ENGLISH.
- t. DEPARTMENT OF TELUGU.
- u. DEPARTMENT OF HINDI.
- v. DEPARTMENT OF RESEARCH & PUBLICATIONS.
- w. DEPARTMENT OF PERFORMING ARTS.
- x. DEPARTMENT OF TRANSLATION.

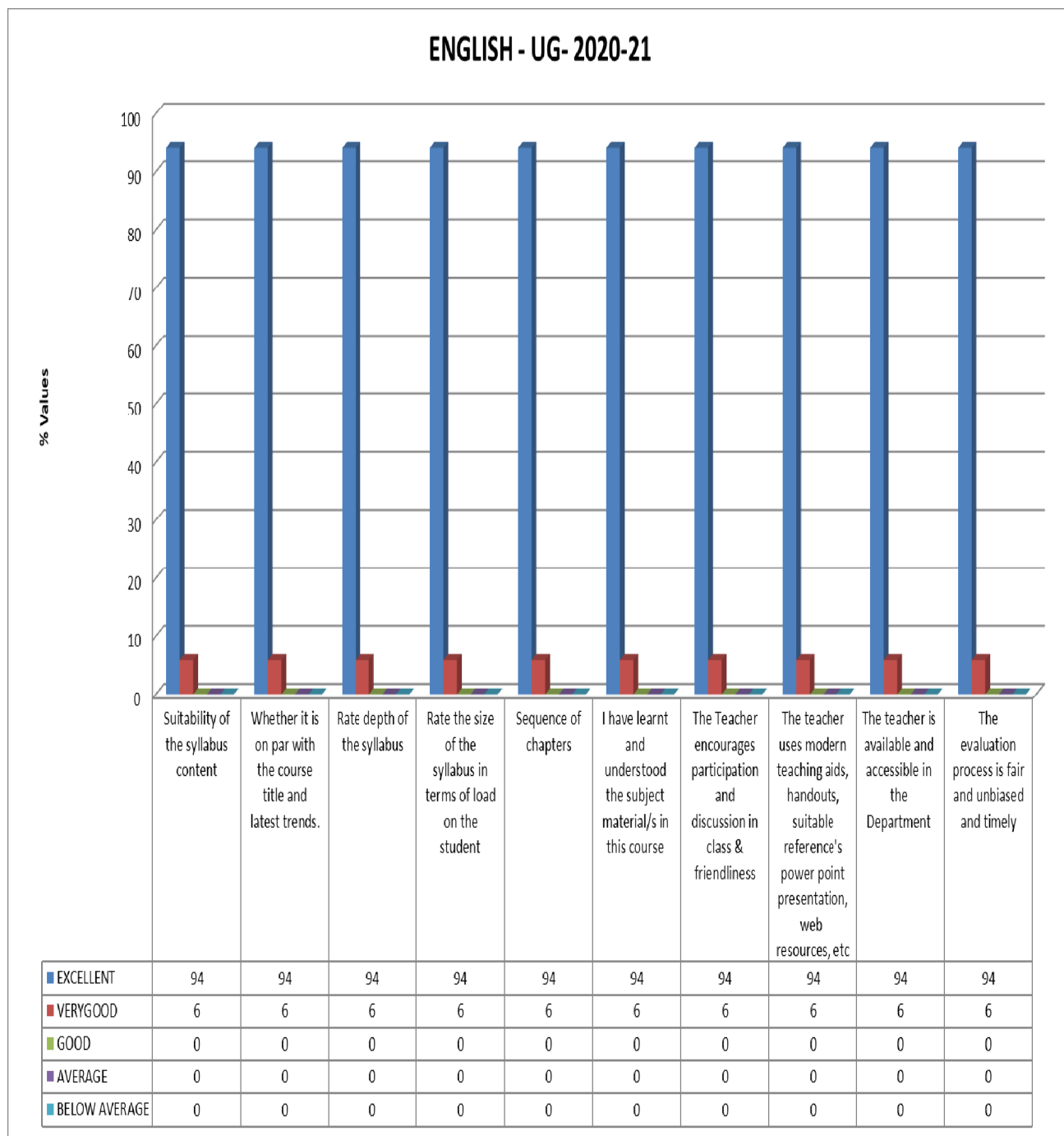


❖ (PG) POST-GRADUATION.



**c. DEPARTMENT OF ENGLISH: -**

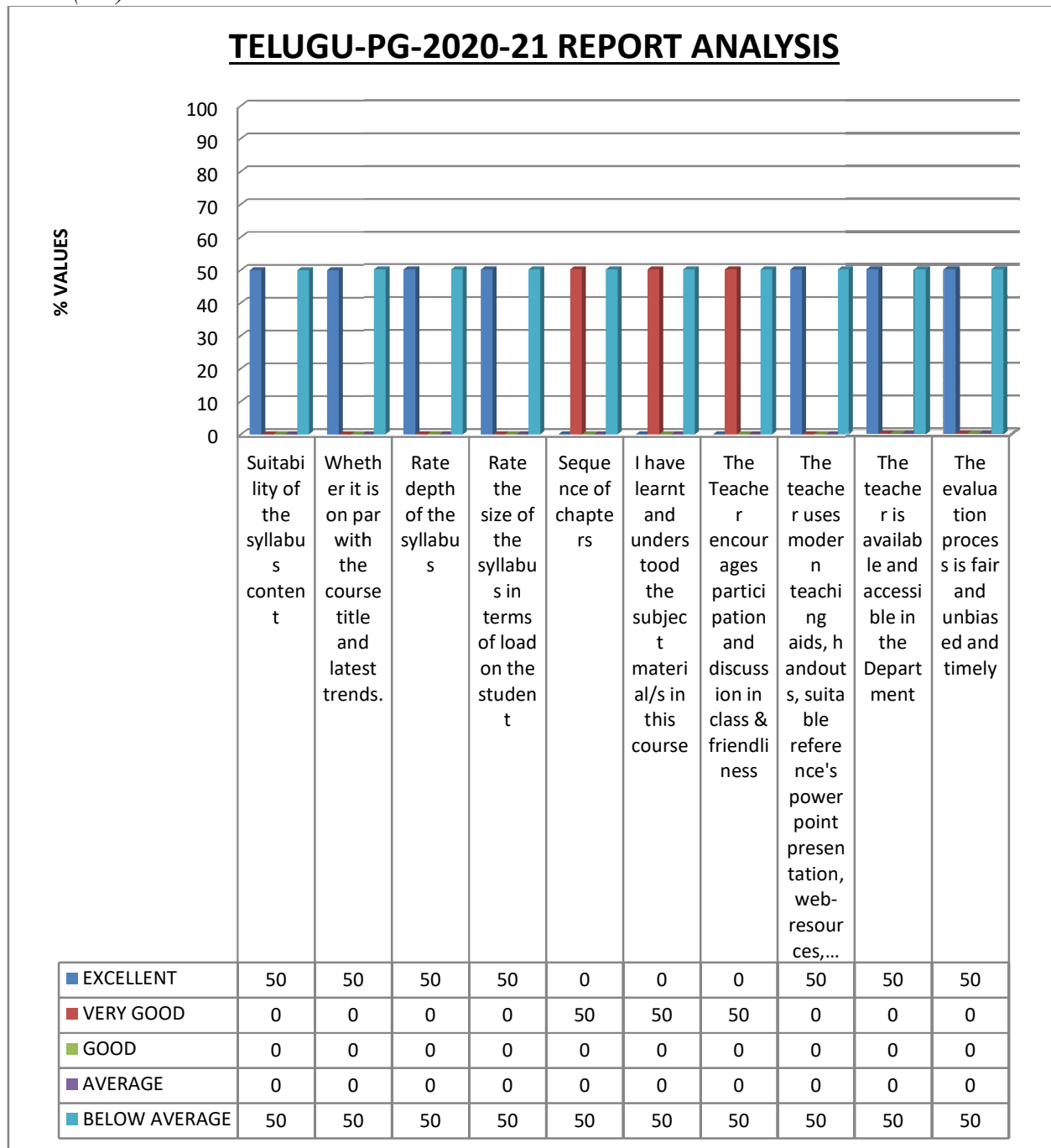
❖ *(UG) UNDER GRADUATION.*



❖ ENGLISH (PG) POST GRADUATE DATA NOT THERE.

**d. DEPARTMENT OF TELUGU: -**

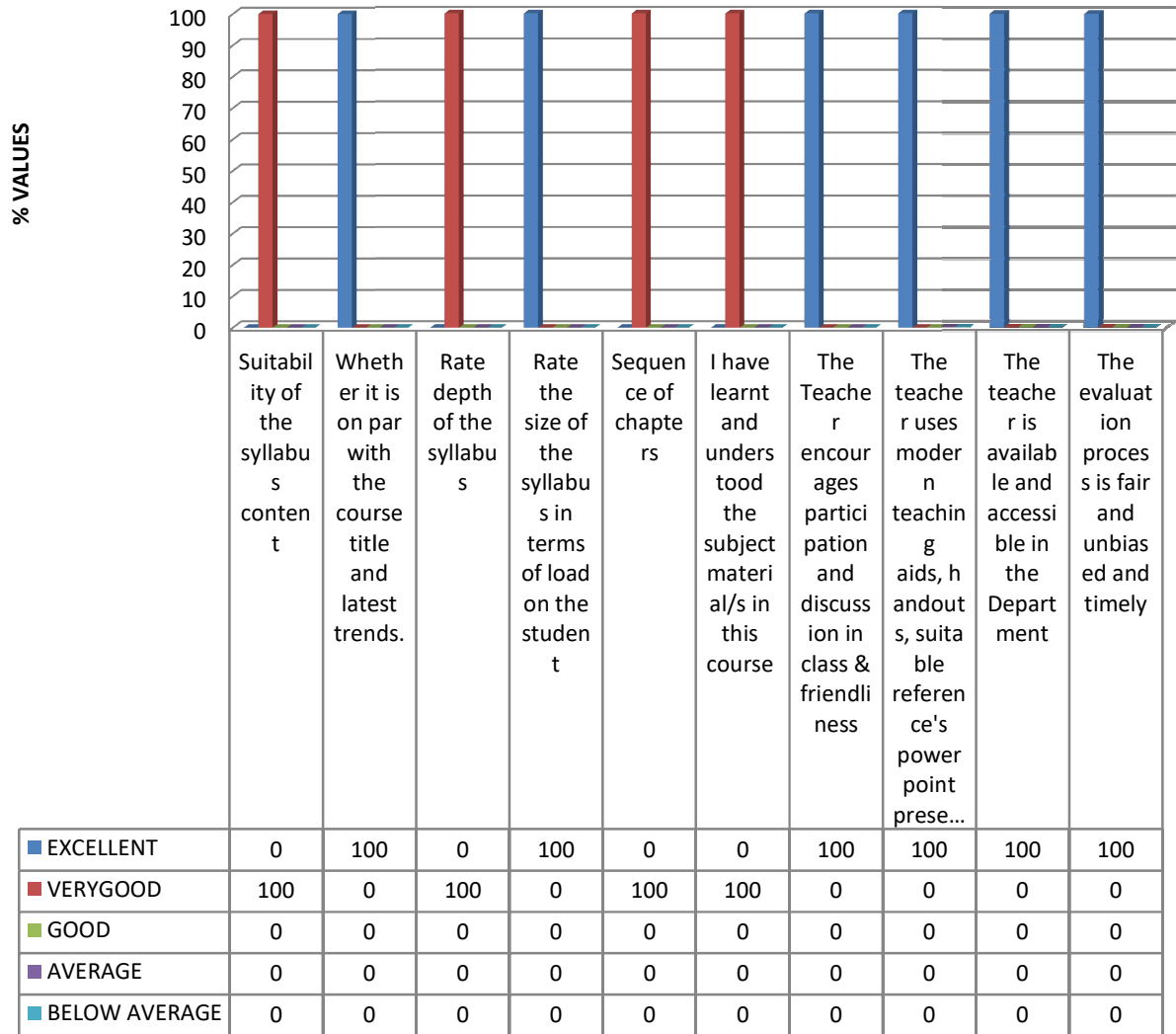
❖ (UG) UNDER GRADUATION.



❖ TELUGU (PG) POST GRADUATE DATA NOT AVAILABLE.

❖ (UG) UNDER GRADUATION.

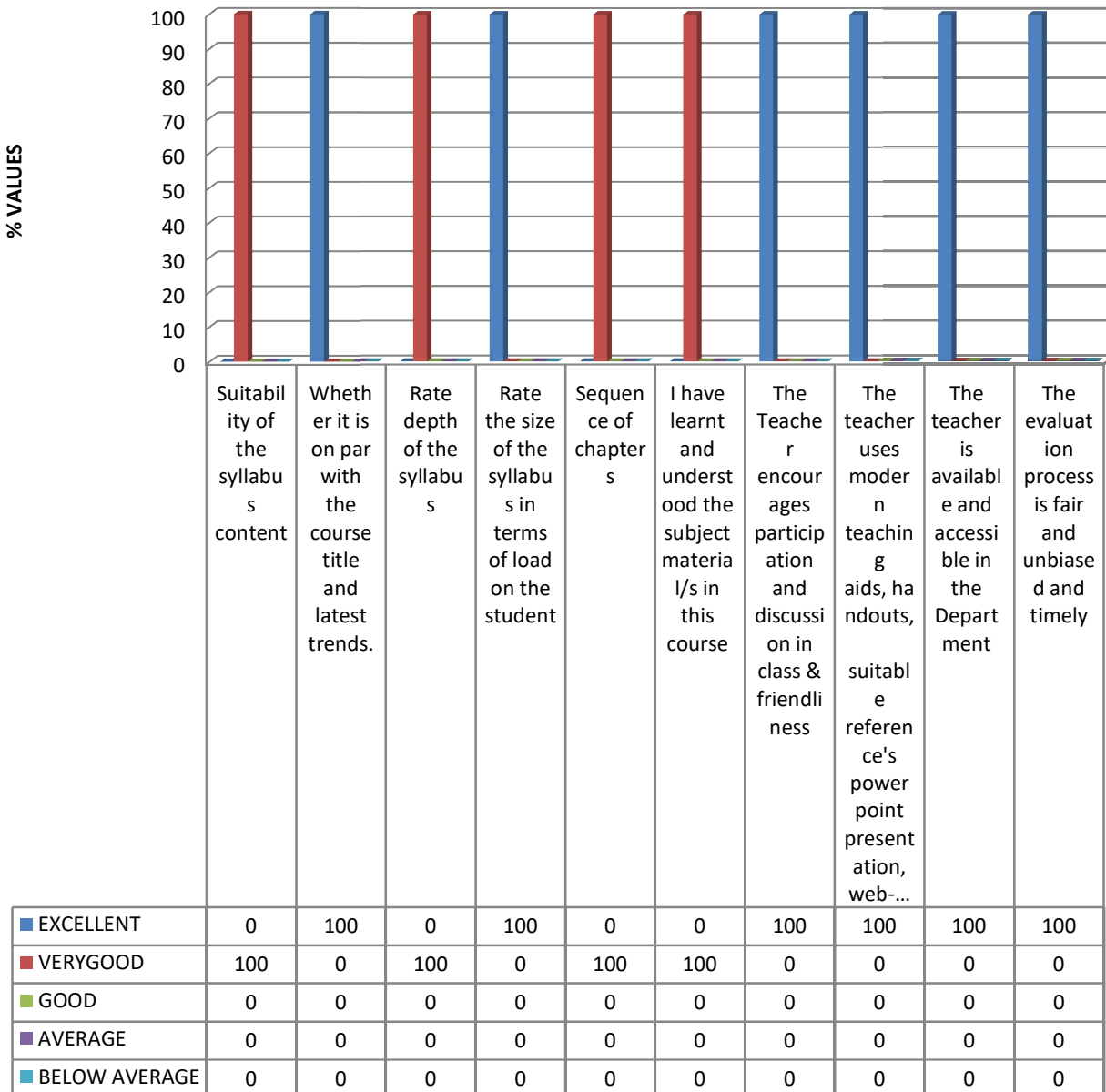
## HINDI- UG - 2020-21 REPORT ANALYSIS

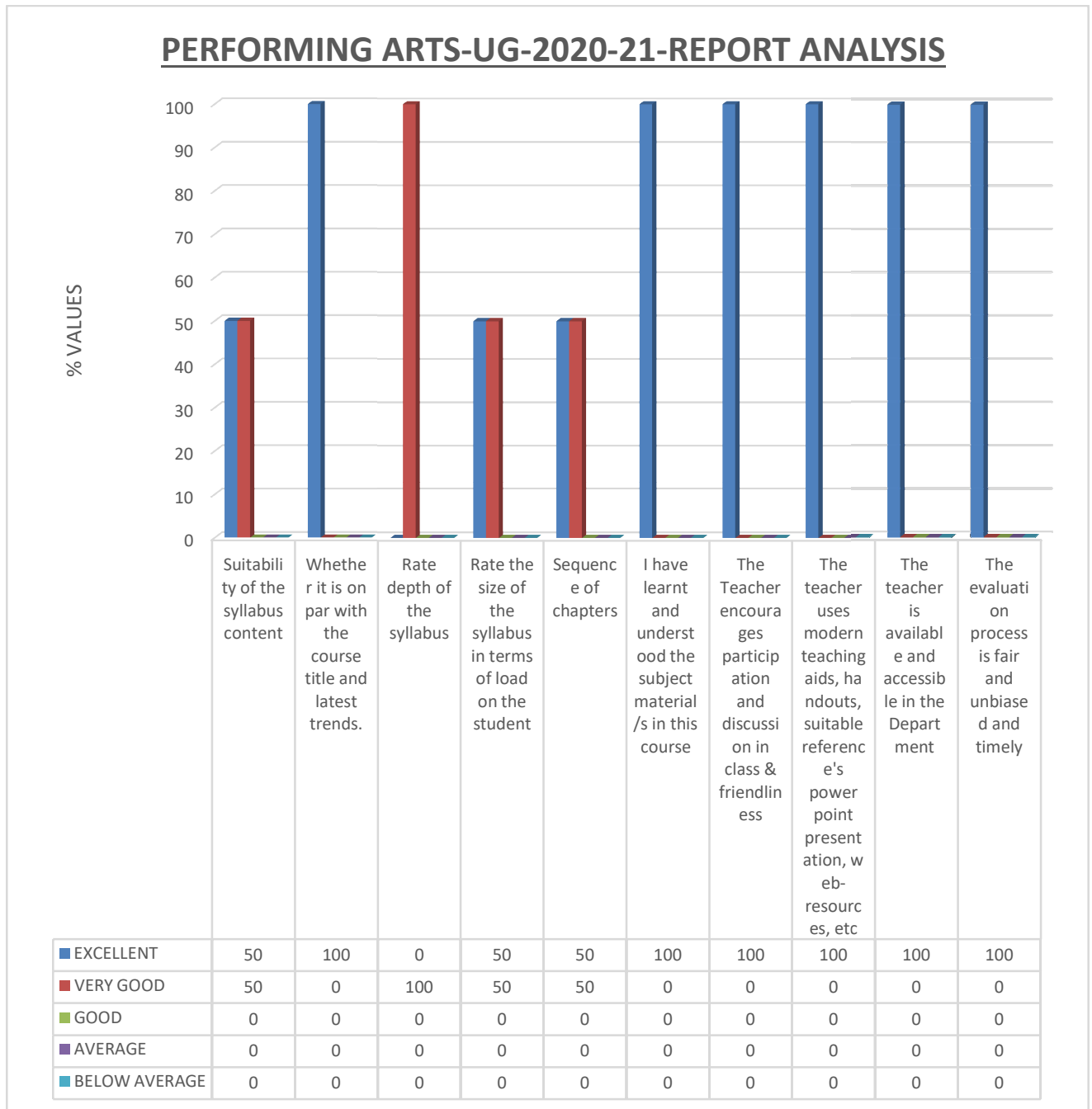




❖ (PG) *POST-GRADUATION.*

## HINDI- PG- 2020-21 REPORT ANALYSIS





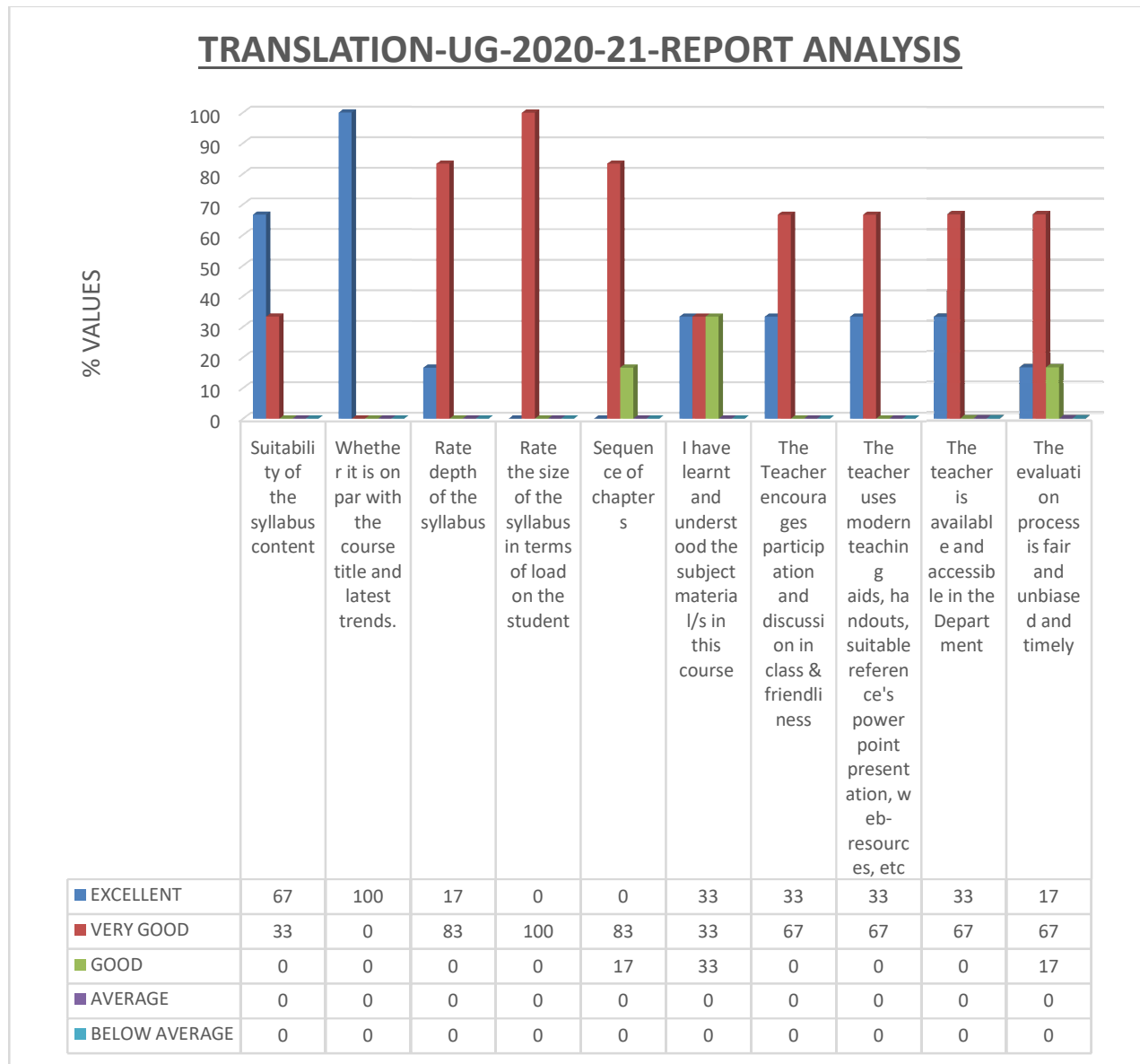
❖ *(PG) POST GRADUATION DATA NOT AVAILABLE.*

**(B) Observations/Findings: -**

- Students were given feedback forms department wise to know the experience they had in every department.
- The analysis of the students' feedback reflects the adequacy and availability of learning facilities.
- The feedback from the students revealed the validity and adequacy of the syllabus. Also, it is quite helpful in reframing the course content according to the societal needs and career.
- The answers rated by the students are considered for the syllabus and accordingly to the other parameters.

**h.DEPARTMENT OF PERFORMING ARTS: -**

❖ (UG) UNDER GRADUATION.



❖ (PG) POST GRADUATION DATA NOT AVAILABLE.

### III. Observations/Findings: -

- Students were given feedback forms department wise to know the experience they had in every department.
- The analysis of the students' feedback reflects the adequacy and availability of learning facilities.
- The feedback from the students revealed the validity and adequacy of the syllabus. Also, it is quite helpful in reframing the course content according to the societal needs and career.
- The answers rated by the students are considered for the syllabus and accordingly to the other parameters.